

# NEWSPAGER

*In the tradition of Woman's Medical College of Pennsylvania and Hahnemann Medical College*

## ***Gene Discovered for Cornelia de Lange Syndrome by College of Medicine Professor Laird G. Jackson, M.D.***

## July/August 2004

Newsletter Volume 5, No. 4

After 30 years of dogged investigative work, Laird G. Jackson, M.D., Professor of Obstetrics and Gynecology at Drexel University College of Medicine, has led an international team of researchers to the discovery of the gene that causes Cornelia de Lange syndrome (CdLS), a disabling disease that affects an estimated one in 10,000 children. For the past seven years, Dr. Jackson has partnered with co-lead researcher Ian D. Krantz, M.D., of Children's Hospital of Philadelphia. Their finding was reported in the online edition of *Nature Genetics* in April 2004.

Named for a Dutch physician who first described it in 1933, CdLS often includes mental retardation, impaired growth, heart defects, gastroesophageal reflux and feeding problems, impaired vision, hearing loss, upper limb abnormalities, and distinctive facial features that typically include thin eyebrows that join together, long eyelashes, thin lips and excessive body hair.

In a study funded by the National Institute of Child Health and Human Development, Dr. Jackson and his team of co-authors used a genetic linkage approach, which is unusual for a disease of this nature in which the patients are incapable of reproduction due to physical or social impairment. "I was confident that we could conduct a successful linkage study if we could find enough



cases in which more than one member of a family has CdLS," he noted.

Dr. Jackson and his team searched the globe and found 12 such families. After analyzing the genomes of each family, they were able to identify four candidate regions for the CdLS gene through a process

■ *continued page 6*

## ***Drexel University College of Medicine Leads Groundbreaking Initiative to Establish Regional Clinical Trials SuperSite***

Drexel University College of Medicine is leading a groundbreaking initiative to establish a regional clinical trials supersite involving collaboration among the five major academic health centers in the Philadelphia region. Officially named the Integrated Research Group of Greater Philadelphia, this cross-institutional legal entity will leverage the medical excellence and thought leadership of DUCOM, Jefferson Medical College, Temple University School of Medicine, University of Pennsylvania School of Medicine and Fox Chase Cancer Center to increase available resources for clinical trials research nationwide. Project development is being funded by BioAdvance, an organization dedicated to growth of the life sciences industry in southeastern Pennsylvania. The supersite expects to begin its first clinical study in December 2004.

"By combining efforts, we will attract more sponsored research to the Philadelphia region by providing pharmaceutical and biotechnology companies with unprecedented study efficiency through standardized

IRB, contracts and clinical SOPs," said Drexel University College of Medicine Chief Operating Officer David Printy. "This is especially critical to pharmaceutical companies as they face growing clinical development costs, complexity and regulatory demands while their research is trending away from the production of blockbuster drugs to those with relatively modest sales potential."

Citing benefits to the College and its supersite collaborators, Printy noted, "Sponsored research provides important revenue to our institutions. After three years, we project – conservatively – \$40 million in incremental studies that can be reinvested in our member institutions. In addition, our exposure to the cutting edge of new therapies and innovation will improve quality of care for our patients while enhancing the education of our students."

### *INSIDE...*

- Dean's Desk . . . . . 2
- Affiliation With Saint Peter's . . . . . 3
- Alumnae/i News . . . . . 9

■ *continued page 6*



**Stephen K. Klasko, M.D., M.B.A.**  
Interim Dean  
Drexel University College of Medicine

## Time For New Year Resolutions!

“Dean Klasko, thank you for the opportunity to become a physician. Drexel will always be a part of my life, thanks to the faculty, staff and classmates who did more than their jobs.” That comment was more than a grateful student articulating her appreciation. For me, it was a turning point in my ability and passion to lead the medical school as Dean.

Truth be told, in academic health care, we spend increasingly more time worrying about the issues that we have the least control over – hospital issues, reimbursement, malpractice, state funding – all important financially, none core to our primary mission. As luck would have it, a day after that fateful “thank you,” and in the midst of being immersed in issues that needed neither my academic nor my business training, I was having breakfast at the Carnegie Deli with a friend and faculty member. Perhaps it was a cholesterol high from my four-egg omelette and hash browns, but with his help, it all seemed to make sense.

He asked a simple question as I was lamenting the state of academic health care. “If you were going to explain what the medical school does in a few sentences – what would it be?” That was simple – we teach students, we train residents, we hire and support clinical faculty members to support the apprenticeship part of that equation, and we participate in science and new discoveries. “OK, how much of your time do you spend on those areas?” And then it hit me – like a day-old bagel flung across the deli. What gives Drexel University College of Medicine its edge is focusing on the things we do well – teaching students, training residents, establishing new discoveries and science, and finding the appropriate clinical models to do all those things.

So, with that in mind, on the spot (and after a few Tums), I made some academic New Year resolutions.

- Spend more time appreciating and developing our faculty and staff. Through many of the interesting times during this year, I was amazed at the stamina, passion and tolerance of many of our faculty and staff. Our clerkship directors who found slots for all our students, our program directors who stayed focused on the [Accreditation Council for Graduate Medical Education] requirements, and many of our faculty and staff who just worked harder at teaching our students need to have opportunities for growth and development within our organization.

Accordingly, I have asked Mary Moran, M.D., to join us as Associate Dean for Faculty Development. She will work with Barb Schindler, Page Morahan, Eli Abrutyn and others to develop a “leadership academy” for our faculty to move forward with their careers. She will also be moving us forward with our entrepreneurial CME activities.

- Celebrate our heterogeneous faculty instead of fighting it. We would not be able to provide enough clinical education for our students and residents without our volunteer faculty —at Hahnemann and at our other clinical campuses. Conversely, we need to celebrate the singular focus and passion for education and research that pervades our “salaried” full-time faculty. There will no longer be an “either-or” philosophy in this medical school, but rather a “both-and” inclusive strategy. *Both* the full time salaried faculty *and* our volunteer colleagues will be part of our future, and the acrimony between them belongs in the past.

I have brought in Dr. Bob Knuppel, who will coordinate these partnerships at our primary campus at Hahnemann as an Associate Dean for Medical Faculty Relations. Bob will also be helping us establish “visiting committees” so that we can benchmark our academic, research and clinical activities.

- Work with our Tenet partners at their regional hospitals where we have students and residents, to provide the best educational environment possible.
- Celebrate and nurture the fact that we have affiliation agreements that create clinical campuses at other great institutions like Abington Hospital and the Mercy system in Philadelphia, Saint Peter’s in New Brunswick, N.J., Allegheny General in Pittsburgh, Monmouth Medical Center in Long Branch, N.J. These campuses allow us to have a multifocal approach to the education of our students, residents and fellows and take advantage of the assets of each. The key is to implement the clinical, educational and research synergies that exist in this model.

I have asked Dr. Allan Tunkel to assume the role of Senior Associate Dean for Academic Campuses. He will be responsible for ensuring that there is no stone unturned as it relates to opportunities for our students and faculty to interact across the campuses.

So, happy New Academic Year. We have a team that is ready to move Drexel University College of Medicine forward with an understanding of what we really can have influence on, and of what’s important. Next June, over omelettes and coffee, I hope we all can say we’ve done a better job of teaching and attracting students, our GME program has strengthened and grown beyond our expectations, our strategic efforts to develop our research infrastructure are paying off in huge strides in externally funded research, and our clinical activities programmatically and financially support our educational and research efforts.

## Drexel Salutes 15 Top Docs



Fifteen COM physicians were among the elite in *Philadelphia Magazine's* 2004 list of Top Doctors—the ones their peers named the best in the region. Thirteen of our finest gathered at a reception given in their honor at the home of Drexel University President Dr. Constantine Papadakis. In the front row (L-R): College of Medicine Chairman Manny Stamatakis, College of Medicine Trustee Donna Gentile O'Donnell, Dean Stephen Klasko, M.D., and Dr. Papadakis.

*Family Practice*, John Heydt, M.D.  
*Geriatric Medicine*, Joel Posner, M.D.  
*Gynecologic Oncology*, John Carlson, M.D.  
*Internal Medicine*, Howard Miller, M.D.  
*Maternal & Fetal Medicine*, Ronald Wapner, M.D.  
*Medical Oncology*, Robert Comis, M.D.  
*Neonatal-Perinatal Medicine*, Alan B. Zubrow, M.D. (St. Chris)  
*Neurological Surgery*, Joseph Piatt, Jr., M.D. (St. Chris)  
*Ophthalmology*, Gary Richard Diamond, M.D. (St. Chris)  
*Plastic Surgery*, Paul Glat, M.D. (St. Chris)  
*Surgery*, Donna Barbot, M.D.  
*Thoracic Surgery*, Michael Strong III, M.D.  
*Vascular Surgery*, Andrew Roberts, M.D.  
*Pediatric Hematology/Oncology*, Frank Shafter, M.D. (St. Chris)  
*Pediatric Infectious Disease*, Sarah Long, M.D. (St. Chris)

**Congratulations, all!**

## Affiliation With Saint Peter's University Hospital Promises Advances in Education, Clinical Research and Technology

Drexel University College of Medicine has formed a new partnership with Saint Peter's University Hospital, New Brunswick, N.J., that will enable 60 third- and fourth-year College of Medicine students and residents to rotate through the hospital's residency program each year, beginning in July 2005.

"The Drexel University College of Medicine model is to develop partnerships with premium community teaching hospitals connected by technology," said Dean Stephen K. Klasko, M.D., MBA. "We are pleased that Saint Peter's, a leading hospital in New Jersey, will become one of our many clinical campuses."

Saint Peter's is a 422-bed, nonprofit, acute care teaching hospital renowned for its Regional Perinatal Center and Neonatal Intensive Care Unit. The new affiliation will partner St. Peter's first-class programs in internal medicine and obstetrics with world-renowned specialists and researchers. Saint Peter's faculty will also have College of Medicine faculty privileges. Combining the 6,800 annual births at Saint Peter's with the births at other Drexel-affiliated hospitals will give students and residents the unique opportunity to participate in the delivery of more than 16,000 babies each year.

(L-R) Ronald C. Rak, Esq., Chairman of the Board of Trustees of Saint Peter's University Hospital; The Most Reverend Paul G. Bootkoski, Bishop of the Diocese of Metuchen; Sheryl Slonim, President and Chief Executive Officer, Saint Peter's University Hospital; Dr. Constantine Papadakis, President, Drexel University; and Stephen Klasko, M.D., Dean, College of Medicine.

Saint Peter's and Drexel first joined forces in 2003, along with the New Jersey Institute of Technology, to form the Medical Technology Center for Infants and Children, the first biomedical technology center in the region geared specifically to infants and children. The new affiliation provides a forum for advancing clinical research, education and technology, as well as fulfilling a shared mission of outreach to the underserved and indigent population.

"This affiliation matches clinical strength with academic excellence," said Sheryl Slonim, President and CEO of Saint Peter's. "We are thrilled that the affiliation will enhance the caliber of medical education and look forward to the many possibilities that will be made available through research and advances in technology."





**Dr. Brady**

**Luther Brady, M.D.**, Hylda Cohn/American Cancer Society Professor of Clinical Oncology, received an honorary doctor of fine arts degree from George Washington University in May. Dr. Brady earned his graduate and undergraduate degrees at George Washington and the art gallery in the school's Medical and Public Affairs Building bears his name.



**Dr. Conley**

**Susan B. Conley, M.D., F.A.H.A.**, Professor, Department of Nephrology at St. Christopher's Hospital, has been elected as an inaugural fellow of the American Heart Association and the Council on the Kidney in Cardiovascular Disease.



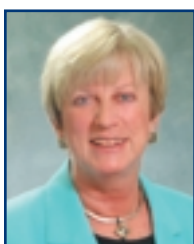
**Dr. Kim**

**Young S. Kim, M.D.**, Assistant Professor of Medicine and Chairman of Infection Control Committee, received a Blue Ribbon Abstract Award from the Association of Professionals in Infection Control for his abstract "Are CDC Criteria Useful for Diagnosis or Surveillance of Catheter Associated Urinary Tract Infections?" at the annual meeting in Phoenix, AZ, June 5-10.



**Dr. Lippa**

**Carol Lippa, M.D.**, Professor of Neurology and Director of the Memory Disorders Program, recently received her graduation certificate for successful completion of ELAM, a national executive leadership program for women in medicine and dentistry based at the College of Medicine.



**Lynn Yeakel**

**Lynn Yeakel**, Director of the Institute for Women's Health and Leadership, has been awarded a \$245,000 grant from AstraZeneca to present the program "Conversations About Women's Hearts and Minds" nationwide. The candid forum on women's health, already staged in San Diego and Boston with panelists Ana Núñez, M.D., Barbara Schindler, M.D., and Katherine Sherif, M.D., will be presented in Philadelphia on September 9 and in Miami on a January date to be selected.

## 2004 Faculty Award Recipients



**Dr. Pleasure**



**Dr. Peitzman**

### **June Klinghoffer Clinical Educator Award:**

Jeanette R. Pleasure, M.D., and Steven J. Peitzman, M.D.

This award is presented to a faculty member who has devoted his/her career to promoting

excellence in the learning of clinical skills and clinical knowledge, serving as a teacher, leader, role model and mentor for students, residents and faculty colleagues alike.



**Dr. Levison**

### **Oksana Korzeniowski Patient Care Award:**

Herbert E. Poch, M.D., and Matthew E. Levison, M.D.

This award is presented to a faculty member who has demonstrated outstanding skills and commitment in the clinical care of patients and through his/her teaching has substantially improved the skills and knowledge of residents, students and medical colleagues.

### **William Likoff Clinical Excellence Award:**

Howard A. Miller, M.D.

This award is presented to a clinician whose professionalism, humanity, ethical standards, diagnostic acumen and ability to develop outstanding clinical programs serves as a role model for those striving for excellence in the practice of medicine.



**Dr. Wagner**

### **Julian Marsh Faculty Scholar Award:**

David K. Wagner, M.D.

This award is presented to a faculty member who has demonstrated excellence in scientific research, has achieved national/international recognition, demonstrated outstanding teaching skills, mentored students as well as peers, and provided consistent, high quality leadership

to the medical school, thereby creating a better environment for all faculty and students.

### **Angelo Pinto Basic Science Educator Award:**

John B. Swaney, Ph.D.

This award is presented to a faculty member who has demonstrated commitment and excellence in the education of medical students through innovative educational programs, serving as a teacher, a leader, mentor and role model to students and colleagues alike.

## Biomedical Graduate, Postgraduate and Professional Studies Awards

The Office of Biomedical Graduate, Postgraduate and Professional Studies held its annual graduation award ceremony and barbecue on May 19 at the Drexel University College of Medicine Queen Lane Campus.

At the awards ceremony, Barry Waterhouse, Ph.D., Associate Dean, presented the awards to a crowd of students, parents and family. This event was in honor of the graduating students – seven who received Doctor of Philosophy degrees and 58 who received Master's degrees in various fields. Several students received awards for their accomplishments in research or academics, including the following:

**Amadeo Bondi, Ph.D. Endowed Graduate Award**  
Seth Narins, Molecular Pathobiology Program

**Bondi Fellowship Award**  
Vanessa Boyce, Neuroscience Program

**Master of Science Biomedical Graduate Studies Student Award**  
Petra Knappe

**Master of Laboratory Animal Science Distinguished Student Award**  
Patrick Beigel

**Alumnae & Alumni Association Award**  
Jeffrey Shannon



Dr. Barry Waterhouse presents the Bondi Fellowship Award to Vanessa Boyce.



At the Biomed awards ceremony (L-R): Mohammed Abedin, Ph.D.; Seth Narins, M.D., Ph.D.; Jacqueline Emrich, Ph.D.; Elinor Cantor, Ph.D.; Kimberly Ann Metera, Ph.D.; and Lawrence Bergman, Ph.D. Drs. Narins and Metera were both presented with hoods for receiving their Doctor of Philosophy degree.

## Our Fulbright Fellow Takes Off for China

Joseph Walline, fresh from his third year in the College of Medicine, has been awarded a Fulbright Fellowship for the 2004/05 academic year. Joseph will spend the year in China researching the development of emergency medicine there and the role of the ER in providing care in urban areas. "I am very excited that I received the Fulbright Fellowship," he said, "and I am especially glad to have the opportunity to represent the College of Medicine abroad."



Walline's fellowship plans pull together several interests. As an undergraduate at Yale, he majored in the history of science and medicine, an enthusiasm he has pursued in Philadelphia. He speaks Mandarin Chinese fluently, and for three years he has volunteered in the Health Outreach Projects' Chinatown Free Clinic. After he returns from China and finishes his fourth year at DUCOM, Joseph plans to apply for residency programs in emergency medicine.

"As an ER doctor, I hope to continue treating urban populations in need, regardless of ability to pay," Walline says. "I also hope to follow in the footsteps of Dr. Vincent Zarro [Associate Professor, Community Experience Office], and start or continue a free clinic serving Chinese-speaking immigrants."

## Women's Health and Leadership Medical Scholarship Winners



Annette Lopez (left) and Sharrón Manuel (right), Women's Health and Leadership medical scholarship winners, flank honoree Leslie Anne Miller who was presented with the 2004 Woman One award for her multiple career accomplishments. The honor, presented annually by Drexel University College of Medicine's Institute for

Women's Health and Leadership, is the centerpiece of the Institute's campaign to raise funds to help underrepresented minority women enter medical school. Lopez and Manuel were the first two recipients of the \$15,000/year four-year grants.

## **Regional Clinical Trials SuperSite ...continued**

The supersite will benefit the Philadelphia region by improving access to clinical studies for the local population, according to Jim Cavan, Executive Director, Business Development and Innovation for the College of Medicine. Cavan collaborated on the idea for the supersite with Printy and Frank Baldino Jr., Ph.D., Chairman and CEO of Cephalon, Inc., one of the world's fastest-growing biopharmaceutical companies. Dr. Baldino also serves as chairman of BioAdvance.

"Improved access leads to higher quality of care for the patients in the studies and that care is paid for by the sponsoring companies while the patients are in the studies," noted Cavan.

Noting the pharmaceutical industry's tremendous support for the initiative, Cavan added, "The supersite will significantly improve enrollment in clinical trials, which has been a critical issue. We are developing information systems to coordinate the activities and data from each school. If a study being handled by one medical school is not completely enrolled, others can offer to help and be compensated accordingly, so everyone benefits."

Printy said that the supersite came to fruition through the dedication and commitment of Dr. Baldino and Constantine Papadakis, Ph.D., President of Drexel University, and Barbara Schilberg, CEO of BioAdvance. "Our leadership role in this initiative is attracting national attention," Printy said. "Ultimately, we want the supersite to set the standard for increasing quality of care and reducing health care costs through clinical trials, not just in Philadelphia, but nationwide."

**Tel: 215-762-8691**

## **ELAM Produces a Powerhouse of Deans**

Five of seven ELAM program graduates who currently serve as deans of medical and dental schools recently reunited in Philadelphia. ELAM (Executive Leadership in Academic Medicine) is a national program for senior women faculty at medical and dental schools and is based at Drexel University College of Medicine.



## **Gene Discovered for Cornelia de Lange Syndrome...continued**

of elimination. Further analysis narrowed the search to a region of chromosome 5.

"Our success shows that this approach works even when the number of families with the genetic transmission is very small," emphasized Dr. Jackson. "This is an important finding. It suggests that casting a wide net for study subjects might work in research involving other similarly rare genetic conditions."

Dr. Jackson became intrigued by CdLS in the 1970s when he responded to a question in a parents newsletter from two mothers of children with the disease. They invited him to attend a gathering of their growing group of 25 families, now known as the Cornelia de Lange Foundation.

"I was drawn by the incredible devotion of these families to their children," he recalled. "I considered my research a responsibility because, in one day, I was seeing more children with this disease than other researchers see in a lifetime." His keen insight told him to begin collecting blood samples even though the technology for genetic studies was in the far distant future.

Last month, the CdLS Foundation celebrated the discovery of the gene at their annual gathering. Julie Mairano, executive director of the CdLS Foundation, said, "This discovery is exciting because it will pave the way for genetic tests to confirm a diagnosis and provide a prenatal test for parents who already have one child with the syndrome. It will also raise awareness of the disease among physicians and scientists and focus interest on better treatments for children with CdLS."

Dr. Jackson added, "Even though it won't help their children, these families feel that our work validates the worth of their children. That in itself is very gratifying."

Moving forward, Dr. Jackson hopes to gain a better understanding of how the gene responsible for CdLS works. "We hope to develop effective interventions for intrauterine development as well as development after birth," he said, "and to find other genes similarly important in early development."

**Tel: 215-762-3155**

**Pictured (L-R): Rosalyn Richman, Co-Director, ELAM; Lois Nora, President and Dean, Northeastern Ohio Universities College of Medicine; PonJola Coney, Senior Vice President for Health Affairs and Dean, School of Medicine, Meharry Medical College; Connie Drisko, Dean, Medical College of Georgia School of Dentistry; Laura Schweitzer, Acting Dean, University of Louisville School of Medicine; Sandra Willsie, Vice President for Academic Affairs and Dean, University of Health Sciences College of Osteopathic Medicine; and Page Morahan, Co-Director, ELAM.**

## Presentations & Publications

**Mark H. Beers, M.D.**, Associate Clinical Professor of Geriatrics, was Editor-in-Chief of *The Merck Manual of Health & Aging*, a new book that provides information about aging and care giving for the elderly.

**Graham C. R. Ellis-Davies, Ph.D.**, Associate Professor of Pharmacology and Physiology, co-authored "Structural Basis of Long-Term Potentiation in Single Dendritic Spines," which was published in the June 18 *Nature*.



**Dr. McGregor**

**Robert McGregor, M.D.**, Associate Professor of Pediatrics, co-authored "An Infant Who Has a Red Papule on a Swollen Tender Arm" in the May *Pediatrics in Review*.



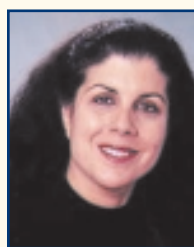
**Dr. Piatt**

**Joseph H. Piatt Jr., M.D.**, Professor of Neurosurgery and Pediatrics and Chief of Pediatric Neurosurgery, was the editor of the April issue of *Pediatric Clinics of North America*, entitled *Pediatric Neurosurgery*. Dr. Piatt also contributed two articles: "Recognizing Neurosurgical Conditions in the Pediatrician's Office" and "Birth Injuries of the Brachial Plexus."



**Dr. Schidlow**

**Daniel V. Schidlow, M.D.**, Professor and Chair of the Department of Pediatrics, co-authored "Pulmonary Exacerbations in Cystic Fibrosis" in the May *Pediatric Pulmonology*.



**Dr. Sherif**

**Katherine Sherif, M.D.**, Assistant Professor of Medicine and Director of the Center for Women's Health, and **Lynn Yeakel**, Director of the Institute for Women's Health and Leadership, spoke to a Philadelphia Bar Association audience on "Heart Health," June 17, in the second of a three-part women's health series the Institute is conducting for the Bar Association.

**Donna Sudak, M.D.**, Program Director and Associate Professor of Psychiatry, and **Bryce Templeton, M.D.**, Professor of Psychiatry, together with **Maju Mathews, M.D.**, and **Babatunde Adetunji, M.D.**, both residents in Psychiatry, presented a symposium, "How to Practice Evidence Based Medicine," at the 157th Annual Meeting of the American Psychiatric Association in May. Also, Dr. Adetunji and Dr. Mathews' articles "Presentation and Management of Psychogenic Non-Epileptic Seizures" and "Sleep Disorders in the Older Patient" have been accepted for publication by, respectively, *Current Psychiatry* and *The Journal of Clinical Geriatrics*.



**Dr. Tom**

**James A. Tom, M.D.**, Instructor in the Department of Orthopedic Surgery, presented "Evaluation and Arthroscopic Treatment of Superior Labral Tears" at the Professional Hockey Athletic Trainers Society Annual Meeting in Baltimore, Md., on June 16. On June 19, Dr. Tom presented "Cutaneous Vesiculations on Anterior Shin in 3 Research Subjects After a 1 MHz, 1.5 W/cm<sup>2</sup> Continuous Ultrasound Treatment" at the National Athletic Trainers Association 55th Annual Meeting & Clinical Symposia also in Baltimore.



**Dr. Tunkel**

**Allan R. Tunkel, M.D., Ph.D.**, Professor of Internal Medicine, gave the 36th Annual Harold Jegher's Memorial Lecture at New Jersey Medical School. Dr. Tunkel's presentation was entitled "Practice Guidelines for the Management of Bacterial Meningitis."

For a Directory of College of Medicine Physicians call 888-745-CARE

## National Forum on Women's Issues in Gastroenterology and Hepatology

The Division of Gastroenterology and Hepatology is sponsoring its Second National Forum on Women's Issues in Gastroenterology and Hepatology, October 1-3, 2004, at the Sheraton Rittenhouse Philadelphia, 227 South 18th Street. Barbara B. Frank, M.D., Clinical Professor of Medicine, is Program Director. National and internationally recognized experts will present cutting-edge information on gender-specific issues in GI and hepatology. Topics include Inflammatory Disease Issues in Women, Gender Issues in Liver Disease, Feminine Effects on Motility, Colorectal Cancer Screening, Bariatric Surgery, Therapeutics During Pregnancy, CPC, and Gender Bias in Academic Medicine.



**Dr. Frank**

For additional information, call the Office of Continuing Medical Education at 215-842-7180 or go to [www.drexel.edu/med/cme](http://www.drexel.edu/med/cme) and click on *Conferences & Seminars*. An early registration discount is offered until September 1. Competitive grants are available for a limited number of students, residents, and fellows.

## In Memoriam: Dr. Mary Hoffman Shaw

Mary Hoffman Shaw, Ph.D., Assistant Professor of Pharmacology and Physiology, passed away on May 20, 2004, after a battle with metastatic breast cancer.

Dr. Shaw received her Ph.D. in Pharmacology from Cornell Medical College in 1997, and joined what was then the Department of Physiology of Allegheny University of the Health Sciences as a postdoctoral trainee. She was promoted to Instructor in 1999, and Assistant Professor in 2003.

As a faculty member, Dr. Shaw devoted the bulk of her efforts to the education of medical and graduate students, and served as Co-Director of the first-year Medical Physiology and Graduate Physiology courses. She is survived by her husband, Tony, and her daughter, Charlotte.

*“Her passing at such an early age has profoundly saddened all who knew her, and she will be greatly missed.”*

“Mary brought a great deal of energy and enthusiasm to the educational programs of the College of Medicine,” said Dr. Michael White, Department Chair. “Her passing at such an early age has profoundly saddened all

who knew her, and she will be greatly missed.”

The Department of

Pharmacology & Physiology has established the Mary Hoffman Shaw, Ph.D., Memorial Travel Award to provide travel support for one graduate student working in the department each year to present his or her research at a national meeting.



Anyone interested in making a contribution to the Mary Hoffman Shaw, Ph.D., Memorial Travel Award should contact Dr. Michael White at [mikewhite@drexel.edu](mailto:mikewhite@drexel.edu).

## Upcoming CME Programs

- Jul 14  
5:30am–  
8:00am  
**HIV Treatment and Transgender Patients: Clinical Challenge**  
Drexel University College of Medicine – Hahnemann Campus  
245 N. 15th St., 3rd Floor  
Philadelphia, PA  
**Contact: Gina Walton – 215-557-2101**
- Sep 10–15  
**18th Combined Skin Pathology Course**  
Philadelphia Airport Marriott  
Philadelphia, PA  
**Contact: Wayne C. Johnson, M.D. – 610-276-1653**
- Oct 1–3  
**Second National Forum on Women’s Issues in Gastroenterology and Hepatology**  
Sheraton Rittenhouse Philadelphia  
227 South 18th Street  
Philadelphia, PA  
**Contact: Jennifer Sumter – 215-842-7180**
- Nov 5–7  
**Dru Carlson Memorial Symposium on Prenatal Diagnosis and OB-GYN Ultrasound (with special session devoted to the early detection of breast cancer)**  
Marriott Marina del Rey  
Marina del Rey, CA  
**Contact: Anthony Seaman – 215-762-3589**

## College and March of Dimes Co-sponsor CME Program

The March of Dimes launched its Prematurity Campaign in Pennsylvania together with Drexel University College of Medicine, in January 2003. The campaign has an ambitious agenda, which includes research funding, education, support for families, and expanded health care coverage. One goal is to reduce the incidence of premature birth in the United States by 15%, from 11.9% of all births in 2001 to 10.1% of all births in 2007. This year, the College of Medicine and the March of Dimes, Pennsylvania Chapter, joined forces to co-sponsor “Healthy Moms and Babies,” a CME program for the City of Philadelphia Division of Clinical Services, Friday, July 23. Topics and presenters on the agenda: “Preconceptional Counseling for Women with Medical Conditions,” Patrice M.L. Trauffer; “Risk Assessment in Pregnancy in a Pill Popping Society,” Ronald Librizzi, D.O.; and “The Social Production of Perinatal Risk: Studying Physiology in Social Context,” Jennifer Culhane, Ph.D.

**Bernard M. Wagner, M.D., HU '49**, has been designated a lifetime National Associate of the National Academy of Sciences. This honor is for extraordinary service to the National Academies in their role as adviser to the nation in matters of science, engineering and health.

**Gordon Bendersky, M.D., HU '53**, co-authored "Therapy with Saffron and the Goddess at Thera," which was published in the Spring 2004 *Perspectives in Biology and Medicine*. Dr. Bendersky's work was also featured in an article in the *New York Times* that discussed the history of medicinal plants.

**Joel S. Betesh, M.D., HU '77**, has been appointed Chief of Medicine of Graduate Hospital. Dr. Betesh served as Medical Director, Medical Intensive Care Unit at Hahnemann University Hospital from 1981 until 1985 and is currently Clinical Assistant Professor of Medicine at Drexel University College of Medicine. Dr. Betesh is board certified in internal medicine and geriatrics and is a Fellow of the American College of Physicians.

**Jonathan Beitler, M.D., MCP '82**, took over the Ocean Breeze unit at Montefiore Medical Center in the Bronx. Dr. Beitler specializes in head and neck cancers and is due to become president of the American Radium Society in 2007.

**Michael Mitchell, M.D., MCP '82**, has successfully completed the requirements for recertification as a sports medicine physician of the American Board of Family Practice and was awarded an ABIM of Added Qualifications in Sports Medicine. He is one of only 1,397 family practice physicians in the nation to receive this official recognition of excellence among family practice physicians who provide care to persons who participate in athletics or exercise programs.

### **Keep in Touch – Know and Be Known**

You can set up a permanent Drexel email account on DragoNet. Call 1-888.DU.GRADS (384-7237) or email [alumrel@drexel.edu](mailto:alumrel@drexel.edu). Send items for "Our Alumnae/i" to [medical.alumni@drexel.edu](mailto:medical.alumni@drexel.edu) or call toll-free **1-866-DREX-MED (373-9633)**.

**James L. Dean, M.D., MCP '88**, was recently elected to a second term as a member of the Board of Directors for Pennsylvania's Chapter of the American Academy of HIV Medicine. Dr. Dean is board certified in infectious diseases and credentialed as an HIV specialist. He also serves as the Medical Director for the city of Philadelphia's West Nile Virus Program and is a key member of the city's SARS and Smallpox teams.

**John A. Prodoehl, M.D., MCP '90**, was elected president of the Harford County Medical Society for the year starting 2005. In addition, Dr. Prodoehl was a featured tort reform speaker at the recent Maryland Medical Society's Rally for Change in Annapolis.

**Scott Klein, M.D., MCP '93**, is the new director of pediatric critical care medicine of the Infants and Children's Hospital at Maimonides Medical Center, one of Brooklyn's most comprehensive programs for critically ill children who require round-the-clock treatment and monitoring.

**Barbara Oppenheim Roehl, M.D., MCPHU '01**, joined the Underwood-Memorial Hospital Family Practice Residency program in July 2001 and was recently named Resident of the Year by the New Jersey Academy of Family Physicians.

**Daniel Rader, M.D., MCP '84**, was featured in an article in the June 7 *Philadelphia Inquirer*, entitled "Complications of the Heart." Acknowledged as a "pioneer in many areas of cholesterol," Dr. Rader is director of the University of Pennsylvania's Preventive Cardiovascular Medicine and Lipid Center. He formerly worked at the National Institutes of Health.

## The Trust Fund of MCP/WMC Alumnae/i Association Awards

### **Women of Medicine Award**

June Klinghoffer, M.D., WMC '45

This award is given to honor a woman faculty member who exemplifies excellent teaching, mentoring and leadership.

Dr. Klinghoffer was associated with the College of Medicine's predecessor institutions since she entered medical school at Woman's Medical College in 1941.

She was designated Professor Emerita of Medicine in 2000 when she retired. Still active in College affairs, Dr. Klinghoffer was appointed this spring to the WMC/MCP Legacy Task Force.

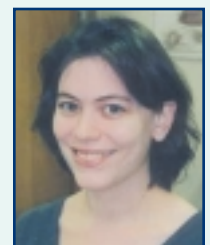


**Dr. Klinghoffer**

### **Mary DeWitt Pettit Fellowship**

Haviva M. Goldman, Ph.D.

The fellowship is awarded annually to a female faculty member in the School of Medicine to support research that will enable the recipient to acquire the credentials necessary to advance in academic rank. Dr. Goldman, Assistant Professor, Neurobiology and Anatomy, will investigate the long bone growth process, examining changing distribution and organization of bone tissue and its mineral and collagen components with age.



**Dr. Goldman**

## MCP Appreciation Day

More than 40 volunteers turned out July 1 to recognize the staff at the MCP campus, who have continuously devoted themselves to the patients and medical students. To show support for that commitment, College of Medicine faculty and staff came from Center City, Hahnemann University Hospital and Queen Lane to hold an MCP Appreciation Day. While landscapers pruned trees and shrubs, others pitched in to clean up the grounds surrounding the hospital building.

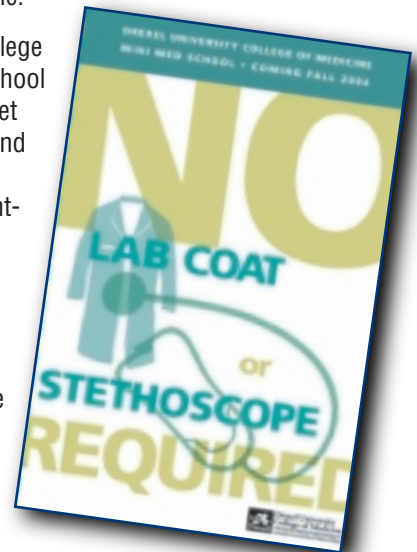
Many of the “honorees” contributed their efforts to the cleanup, as well – special mention goes to the Emergency Medicine team, who were out in force! “We are a together group,” one staffer said. “Emergency Medicine shows up!” The volunteers received T-shirts, and muffins and juice were served throughout the cleanup. Many people expressed surprise and pleasure at the final results.



## A Little Medical School for Everyone

While up to 90 million adults have limited health literacy, according to the Institute of Medicine, studies show that the more a patient is able to understand and take an active role in his or her health care, the better the outcome. There are also many people who have an avocational interest in medicine.

Here’s a reminder that the College of Medicine’s Mini Medical School is the layperson’s chance to get an inside look at medicine – and it’s not on television. A series of eight weekly classes in front-burner medical topics, Mini-Medical School is designed for the public. “Call 911: The Real ER,” “From Katie Couric to the Virtual Colonoscopy,” “The Secret to Aging: Exercise and Preventive Health” and “Tele-Surgery and Robotics: The Future is Here,” are among the subjects.



Classes taught by College of Medicine faculty will include a lecture, Q&A discussion and a “get your hands dirty” laboratory; and the “students” will be exposed to the latest technologies and treatment options. The first Mini-Medical School will run Tuesday evenings from September 21 to November 16 (except Tuesday, November 2) on the Queen Lane Campus. Students will be accepted on a first come, first served basis, for the nominal fee of \$95 for the eight-week program. Further details are on the website at [www.drexel.edu/med/minimed](http://www.drexel.edu/med/minimed), or call **Peggy Lee** at **215-762-6800**.

## By Popular Demand



The number of requests for copies of the Commencement speech by Mark Morocco, M.D., and the talk by honorary degree recipient Hardy Hendren, M.D., indicate a heartfelt response from their audience. Both Dr. Morocco’s speech, “The Season Premiere of Your Medical Career – 15 Minutes of Fame or Long-Running Hit?” and Dr. Hendren’s “Reflections Half a Century Later” have been posted on the College of Medicine website and can be accessed at [www.drexel.edu/med](http://www.drexel.edu/med).

Shown here just before the Commencement ceremonies: Dr. Morocco (left) and Dr. Hendren flank Drexel University President Constantine Papadakis.

## Pathologist's Assistant Program to Launch in June 2005

The College of Medicine has established a new program leading to a Master of Science in Pathologist's Assistant. Program Director James W. Moore, B.A., M.H.S., announced that the two-year full-time program, to begin in June every year, will accept its first students in 2005. Applications are being accepted for the inaugural class.

A pathologist's assistant provides anatomic pathology services under the direction and supervision of a pathologist, consisting primarily of gross examination of surgical pathology specimens and performance of autopsies. The degree program comes in response to the increasing reliance of healthcare systems on allied health personnel and physician extenders, in particular in pathology and laboratory medicine.

Classes in the first year of the program are supplemented by pathology laboratory exposure. The second year includes several hospital-based rotations offering progressively more responsible experience in autopsy and surgical pathology.

Pathologist's assistants often come from the ranks of former histotechnologists, medical technologists, cytotechnologists or autopsy technicians. They work in hospitals, in private labs and research centers, and in medical examiner's offices. The United States, Canada and Australia are among the countries where pathologist's assistants are employed.

For more information about the program, contact: **James W. Moore**, [james.w.moore@drexel.edu](mailto:james.w.moore@drexel.edu), or the program coordinator, **Maggie Jara**, at [margaret.jara@drexel.edu](mailto:margaret.jara@drexel.edu).

## Medical Students Gain Insights in Channel 6 Internship

The HealthCheck intern program, a cooperative effort of Channel 6 WPVI-TV and the College of Medicine, gave recent graduate Chrystal Eller, M.D. (right in photo), an opportunity to practice her communication skills.



She traveled for some stories, searched out useful websites and looked for items of health news. That's not all, according to Medical Producer Dawn Heefner (left). When WPVI did a story on the effects of fast food on the arteries, Heefner said, "Chrissy was our volunteer."

WPVI airs a 3- to 5-minute HealthCheck program, featuring one to five stories, every day. One of the intern's jobs is to reply to the health questions in viewer email, researching the answers and discussing them with the station's medical correspondent. "It was interesting for me because I'm going to be doing family practice, and a lot of questions were the kind of thing patients will be asking," Chrystal said. "It was a great opportunity for me and one I think more of our students should get to take part in, especially those interested in primary care."

For information on the HealthCheck intern program, contact **Coleen Cannon**, **Communications Manager** at [cac39@drexel.edu](mailto:cac39@drexel.edu).

## Compliance Corner: Much Ado About Inpatient Templates



**Linda Thomas**  
Manager  
Compliance Services

Physicians are keenly aware there is a "push" to implement inpatient templates for documentation. The medical records staff at Hahnemann University Hospital has alerted Drexel University Physicians™ that a large assortment of physician practices templates are found in the inpatient medical record, with many formats yet to be reviewed by the hospital forms committee. Drexel University Physicians™ Billing and Compliance coders have agreed to evaluate all templates in use and work to provide standardization. Each specialty practice has specific patient information they feel is important and necessary, and hence standardization is a challenging prospect. First and foremost, we must remember that the template(s) used will not only be part of the permanent medical record but will also reflect on the veracity of our physicians. These documents must support continuity of care, documentation guidelines, level of service reported, legal and quality concerns. Templates, like other useful tools, can lend themselves to abuse, and careful design is important. A habit of just "checking" boxes without documented medical necessity has the potential for problems. Currently there are no specific payer rules set

for template design, so physicians have an opportunity to develop tools that reflect the way they practice medicine and comply with guidelines. The team involved in the redesign and standardization of templates recognizes the need for evaluation of our physicians' needs, training, implementation, and assessment to assure all aspects of documentation are supported and user friendly. Expect training in "new" template use in the fall of 2004!

Tel: 215-762-1530

245 N. 15<sup>th</sup> Street, Mail Stop 484  
 Philadelphia, PA 19102

## Bulletins:

### Women's Health Forum in Dallas

"A National Conversation on Women's Health" – for physicians, patients, pharmaceutical reps and researchers – will be presented in Dallas, October 24-27, by the College of Medicine's Institute for Women's Health and Leadership (IWHL), in cooperation with California-based "Innovations in Medicine." Issues to be covered in the "no speeches," question-and-answer format include cancer, heart health, human behavior, technology and public policy. Katie Couric, NBC's *Today Show* host, is an invited speaker. The DUCOM faculty team will be led by Dean Stephen K. Klasko, M.D., Chair of the Conversation's Medical Advisory Board, and IWHL Director Lynn Yeakel. For further information, call **215-842-7041**; e-mail [iwhl@drexel.edu](mailto:iwhl@drexel.edu); or visit <http://ncwh.iionline.com>.

### AMA Proposes Registry for Clinical Trials

The American Medical Association in its annual meeting approved a policy asking the Department of Health and Human Services to create a registry for all clinical trials in the United States. Trials would be entered in a database at their outset as would the eventual results. That way, all study results – positive and negative – would be publicly available whether the study is published or not. Interestingly, the International Committee of Medical Journal Editors – whose members include *JAMA*, *The New England Journal of Medicine* and *The Lancet* – is considering a proposal that not only would call for trials to be registered but would rule out publication of unregistered studies.

### Study Takes a Better Count of the Uninsured

The Census Bureau's Current Population Survey reports the number of people who had no health insurance for the full calendar year. That number doesn't begin to tell the story of those who lacked insurance for a part of the year. A 2002-03 study by Families USA, based on Census data, concluded that of Americans under the age of 65, a staggering 82 million, or one out of three, were without health insurance during all or part of 2002 and 2003. Of those, 16.7% were uninsured for the full two years; 65.3% were uninsured for six months or more. By state, the record for uninsured under age 65 was in Texas, with 43.4%. Minnesota came in best, at 22.4%.

## Calendar:

<b>July</b>	<i>Eye Injury Prevention Month</i> <i>International Group B Strep Awareness Month</i>
July 19-25	<i>National Diabetes Awareness Week</i>
July 21	Bone Imaging Facility opens at the College of Medicine's Queen Lane campus
July 23	"Healthy Moms and Babies" CME Program, co-sponsored by the March of Dimes and Drexel University College of Medicine
<b>August</b>	<i>National Immunization Awareness Month</i> <i>Cataract Awareness Month</i> <i>Spinal Muscular Atrophy Awareness Month</i>
Aug 2-6	First Year Orientation for the Class of 2008
Aug 6	White Coat Ceremony 3:00 p.m., Philadelphia Hilton, City Avenue Contact Marie Hartman <b>215-991-8219</b>
<b>September</b>	<i>Gynecologic Cancer Awareness Month</i> <i>Prostate Cancer Awareness Month</i> <i>Labor Day</i>
Sept 6	Conversation about Women's Hearts and Minds <sup>SM</sup> , presented by the Institute for Women's Health and Leadership, Philadelphia
Sept 9	Contact Meghan Burnett <b>215-842-7041</b> for more information
Sept 20-27	<i>National Osteopathic Medicine Week</i>
<b>October</b>	<i>Health Literacy Month</i> <i>National Breast Cancer Awareness Month</i> <i>Healthy Lung Month</i>
Oct 1-3	Second National Forum on Women's Issues in Gastroenterology and Hepatology, Sheraton Rittenhouse Philadelphia Contact Jennifer Sumter <b>215-842-7180</b>
Oct 24-27	"A National Conversation on Women's Health," presented by the Institute for Women's Health and Leadership, Philadelphia Contact Meghan Burnett <b>215-842-7041</b>